

Honda Civic 2019 Switch Instrument Panel Information Driver Side

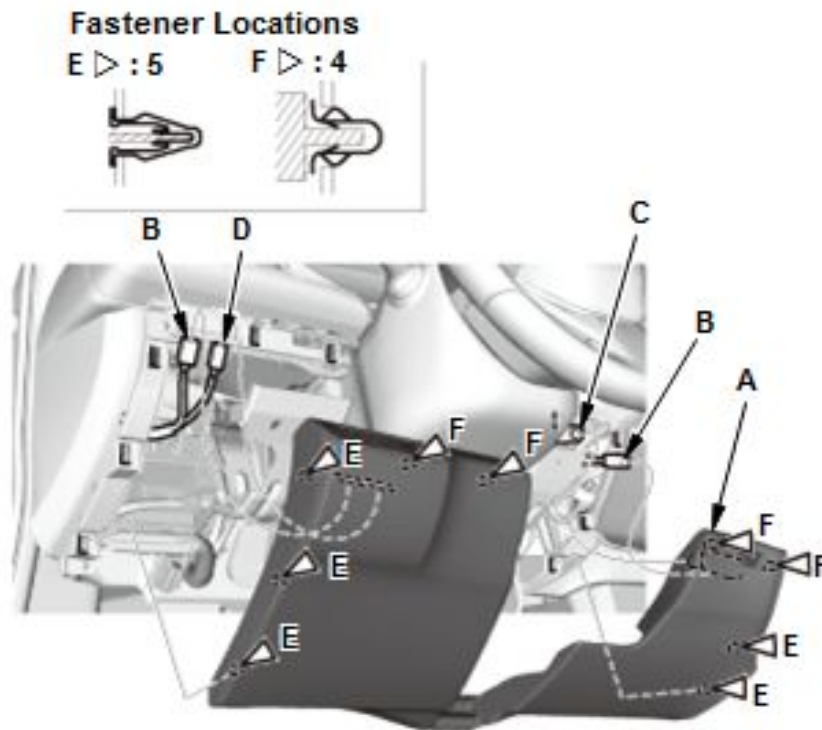


The information in this guide is based on the 2019 Honda Civic Sedan Touring model.

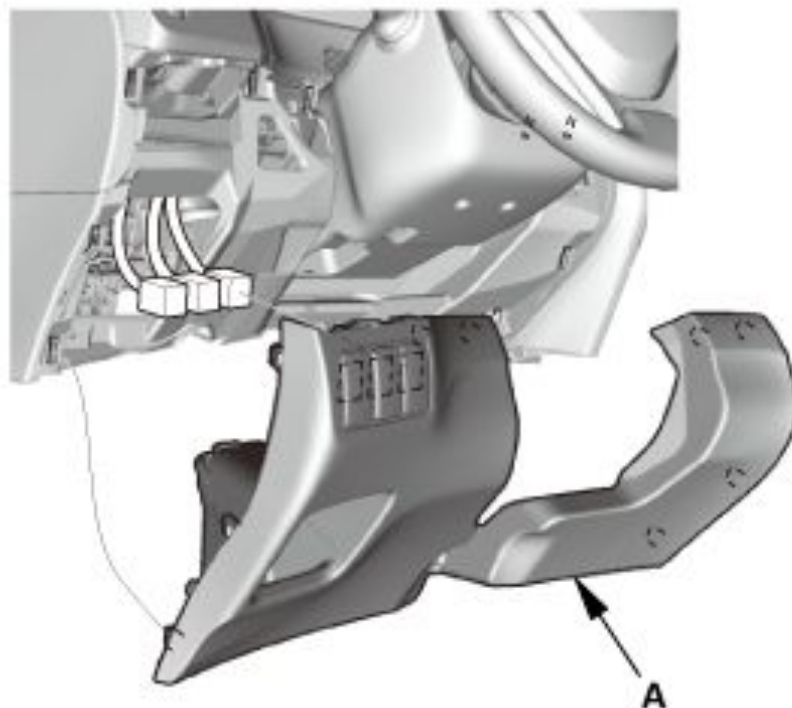
Driver's Dashboard Lower Cover Removal/Installation

Video link: <https://youtu.be/X0ccgjxZaKU>

1. To remove the dash cover it is not necessary to use screwdrivers, simply pull the lower left side of the cover to release the clips.
2. Then gently tilt the cover to remove the top clips.
3. Disconnect the connectors **B**(RDM and CMBS) **D**(VSA) and **C**(temperature sensor) for some models



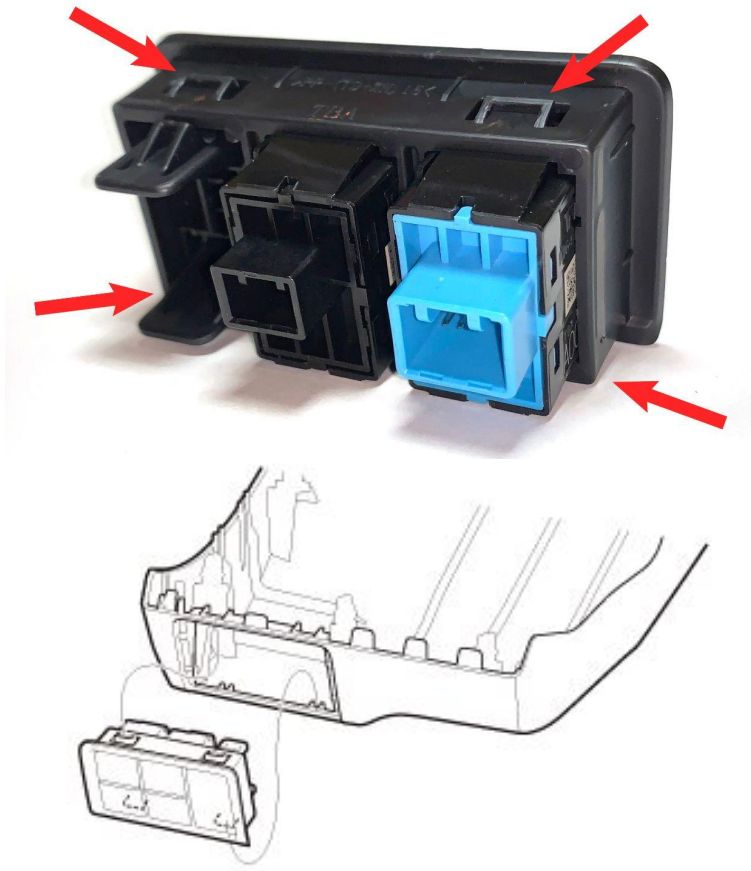
Here is a more simple image:



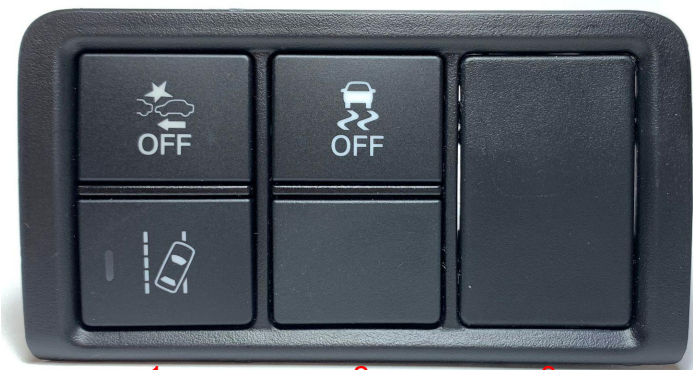
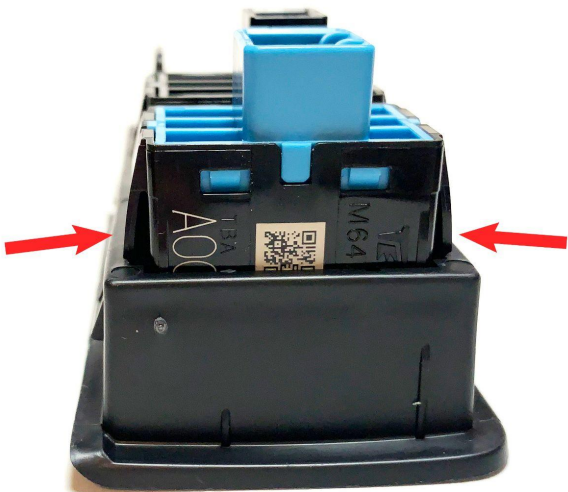


Switch Trim Removal/Installation

To release the entire module press the 4 plastic latches

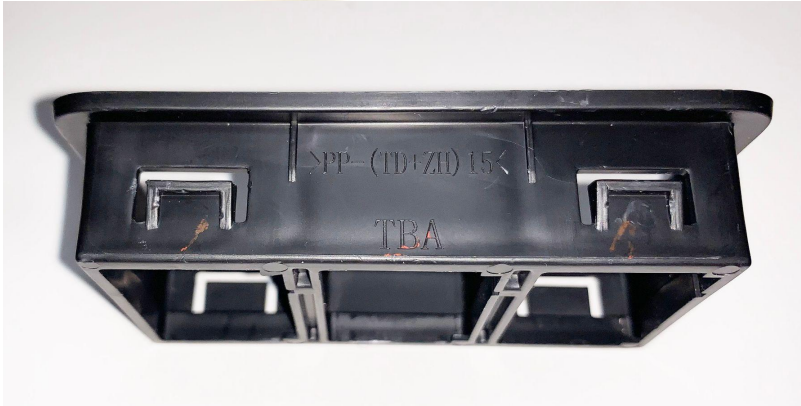
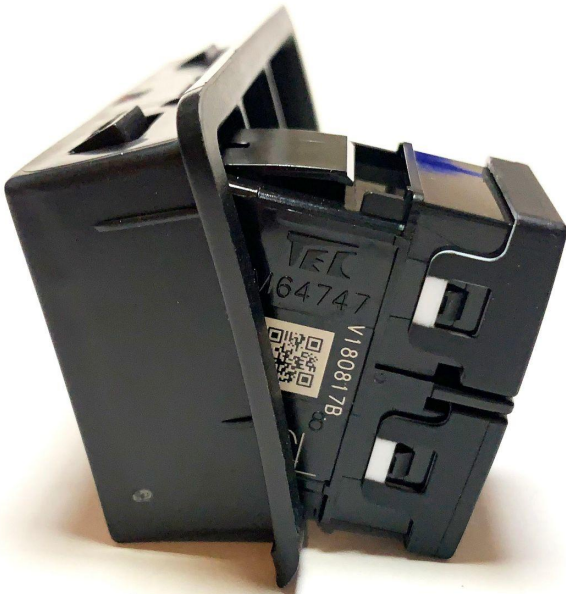


Buttons removal

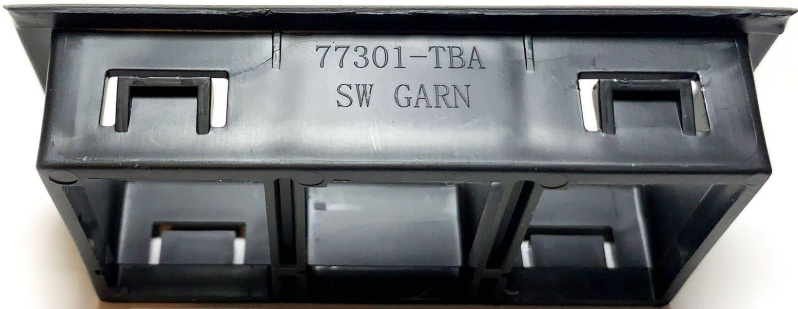


3 slots
Each slot in pairs

Photos



Frame front



Frame back



Modding

In this model there are three blank buttons, so we can use the blanks to add useful modifications to our civics. In my case I have respected the OEM style, and I have added two additional buttons. These buttons modifications like the VSA buttons light up when the headlights are turned on, so the wiring has 2 wires for the button led and the others for the connected accessory. In the future I will update this guide to talk about the wiring of these switches and how they work.

Each button module is constructed in pairs. So we can't change each button individually.

These buttons have only one plastic latch and can be moved to any place and we can also add a third pair of buttons as shown in the picture.



OEM style mod

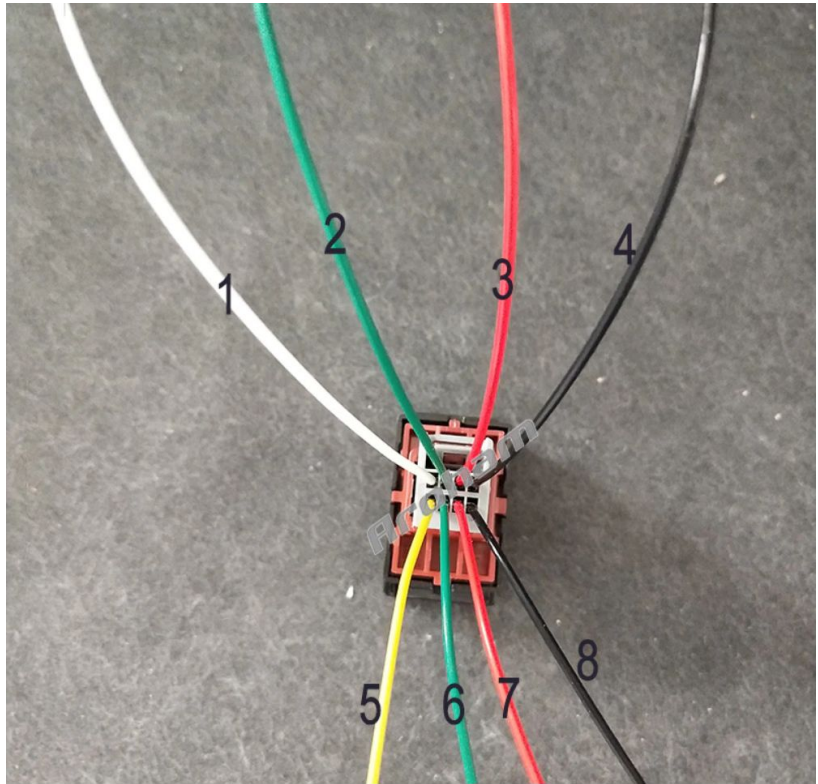


Links:

<https://bit.ly/3dPpltl>

Modding

1. White wire positive positive input
2. Green wire positive output
3. Red line background light positive
4. Black wire negative
5. Yellow wire positive input
6. Green wire positive output
7. Red line background light positive
8. Black wire negative



Part Number

Switch Assembly, VSA & Lid
2016-2022 Honda
35300-TBA-A21

Switch Assy., Cmbs & Ldw
2017-2021 Honda
35310-TGG-A01

Switch Cover Blank
2016-2022 Honda
77755-TBA-A00ZA



Frame Switch Panel
2016-2021 Honda
77301-TBA-A01ZA

Links:

VSA (around \$30)

<https://www.hondapartsonline.net/oem-parts/honda-switch-assembly-vsa-and-lid-35300tbaa21>

<https://www.hondapartsnow.com/genuine/honda~sw~assy~vsa~lid~35300-tba-a21.html>

Frame

<https://www.hondapartsnow.com/genuine/honda~sw~garn~nh900l~77301-tba-a01za.html>

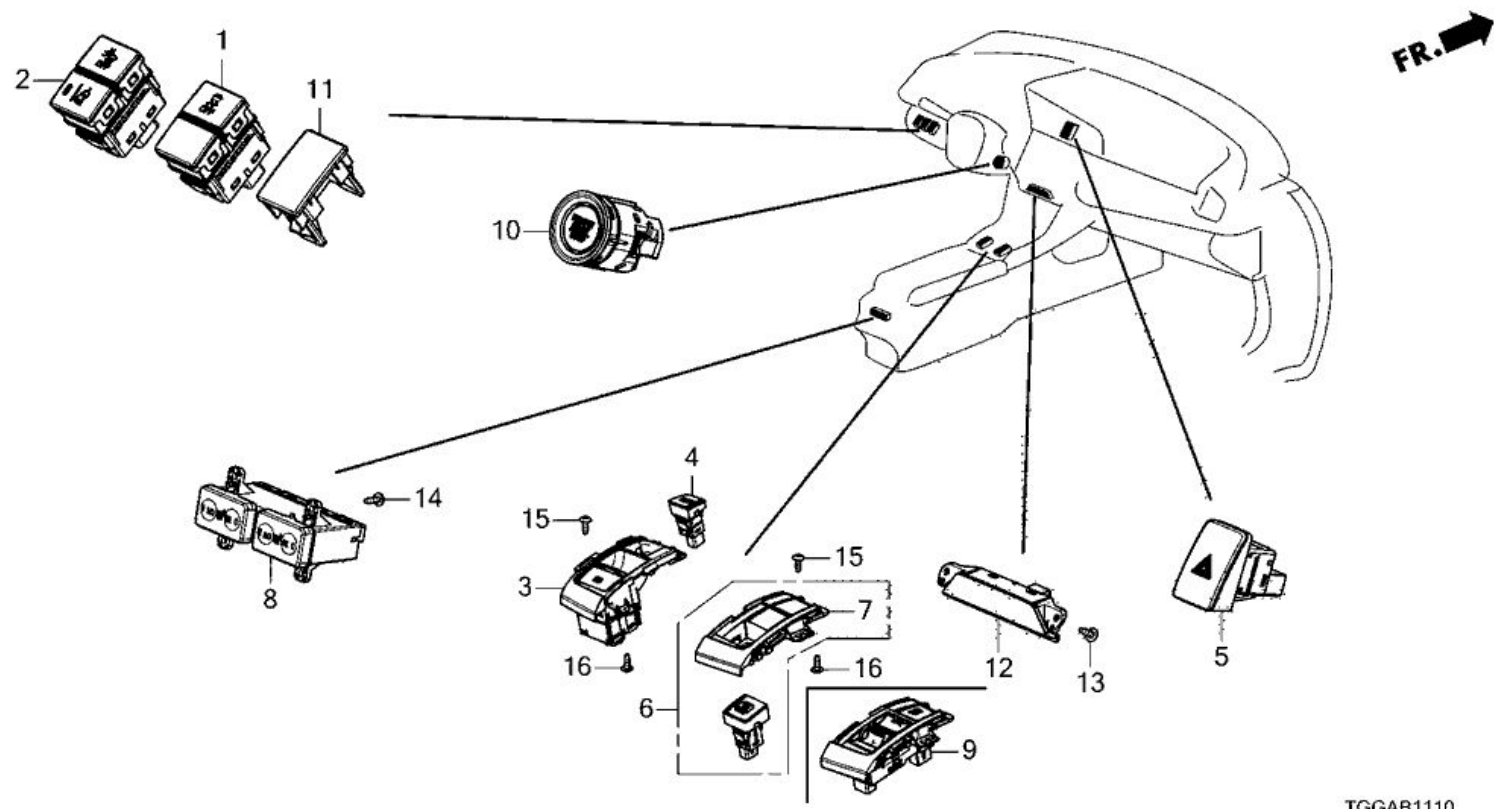
Switch Blank Cover

<https://www.hondapartsnow.com/genuine/honda~lid~sw~ho~nh900l~77755-tba-a00za.html>

Switch CMBS LDW

<https://www.hondapartsnow.com/genuine/honda~switch~assy~cmbs~ldw~35310-tgg-a01.html>

Part Number



TGGAB1110

Inside switches

LED

